

EN

Electrical Technical File

AccessLane™

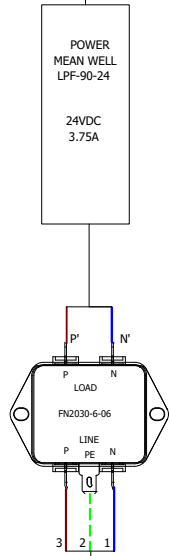
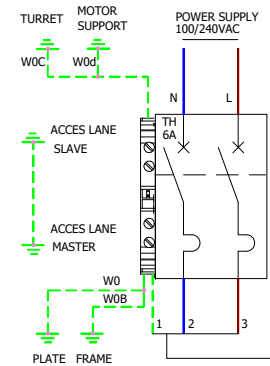
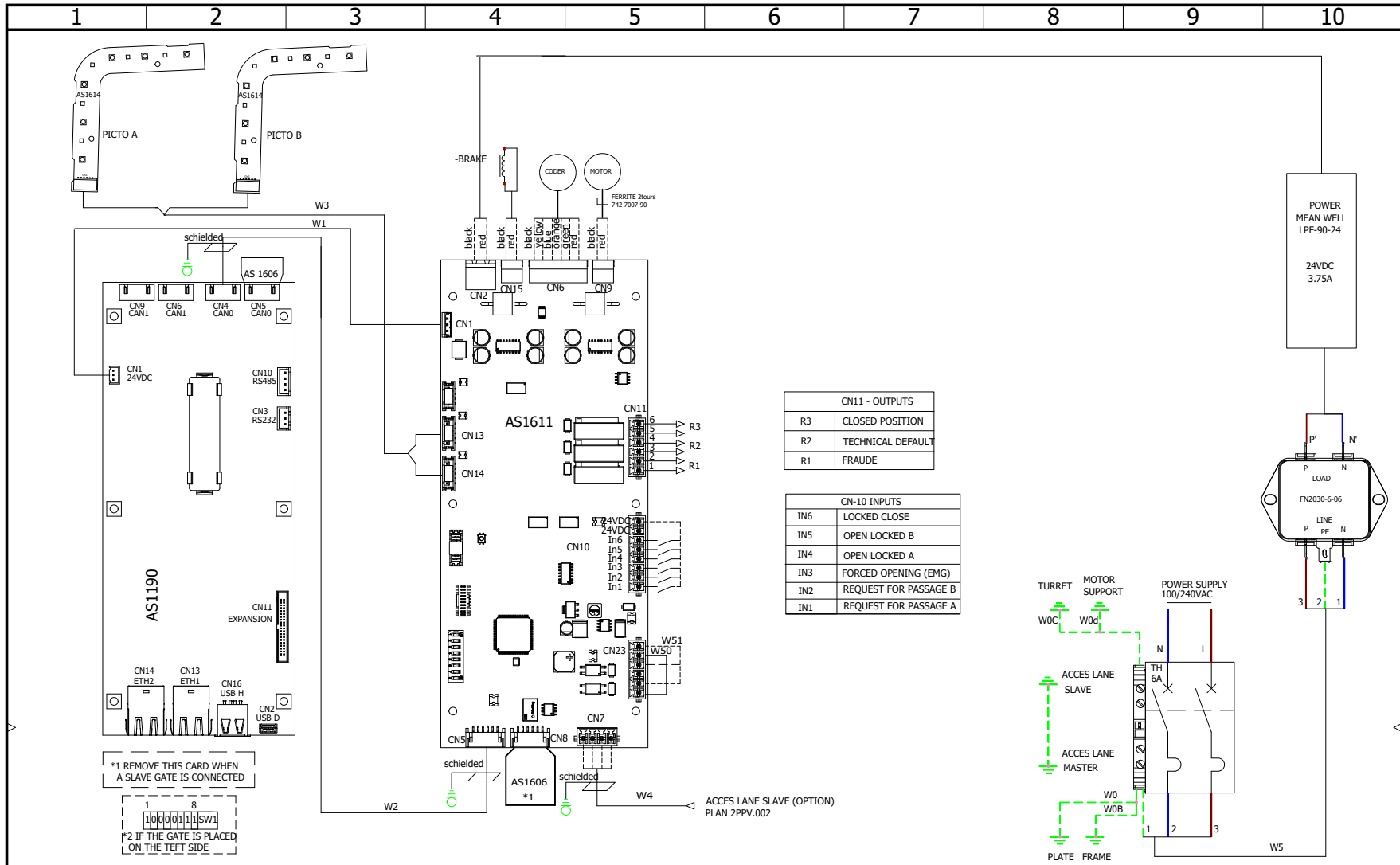


ACCESSLANE

Rev. 03 • Update 08/2022



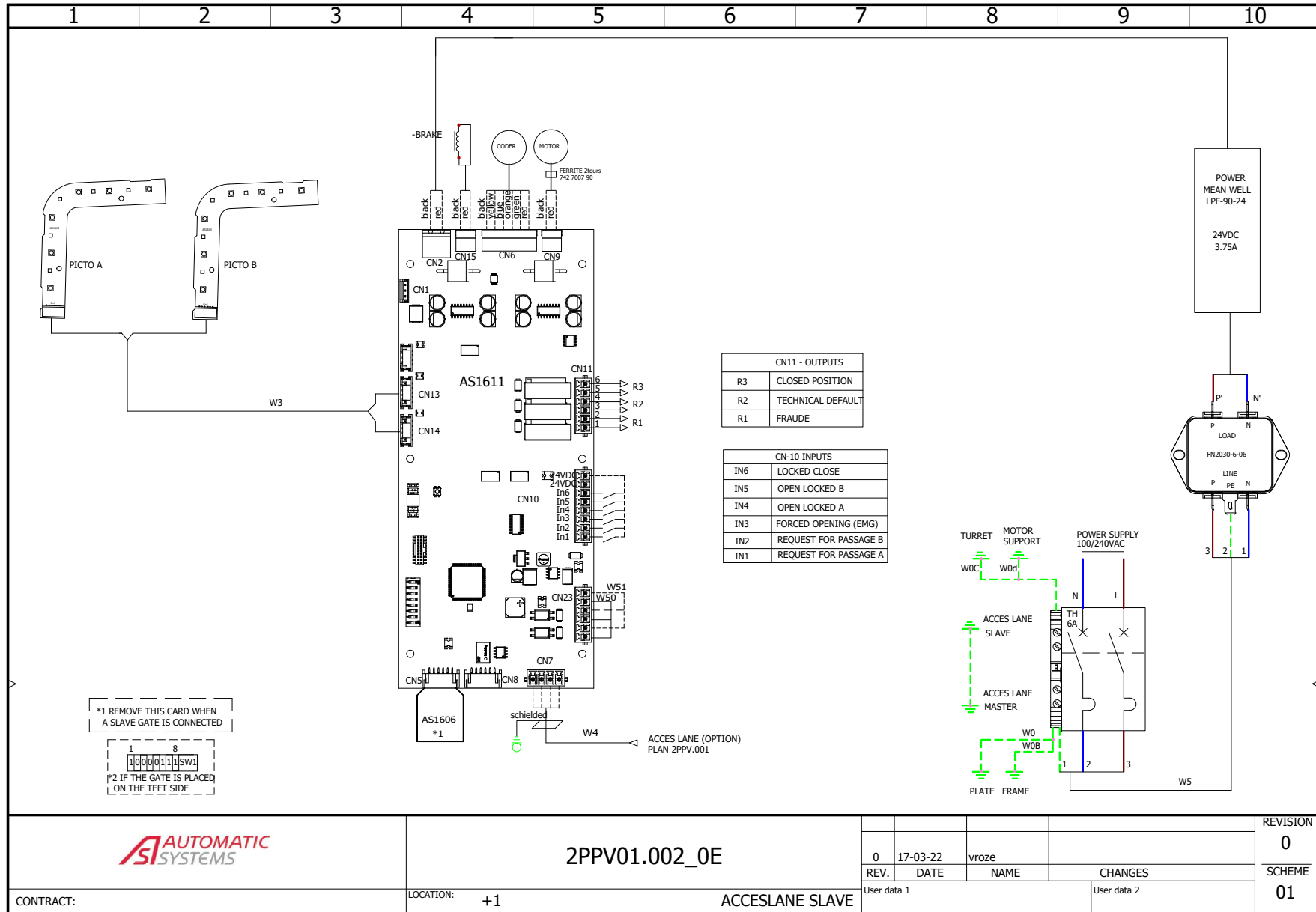
ACCESSLANE - GLASS SWING GATES



SOLIDWORKS Electrical

	2PPV01.001_OE			REVISION
	CONTRACT:	LOCATION: +1	ACCESLANE	0
				SCHEME
				01

ACCESSLANE - GLASS SWING GATES



SOLIDWORKS Electrical



2PPV01.002_0E

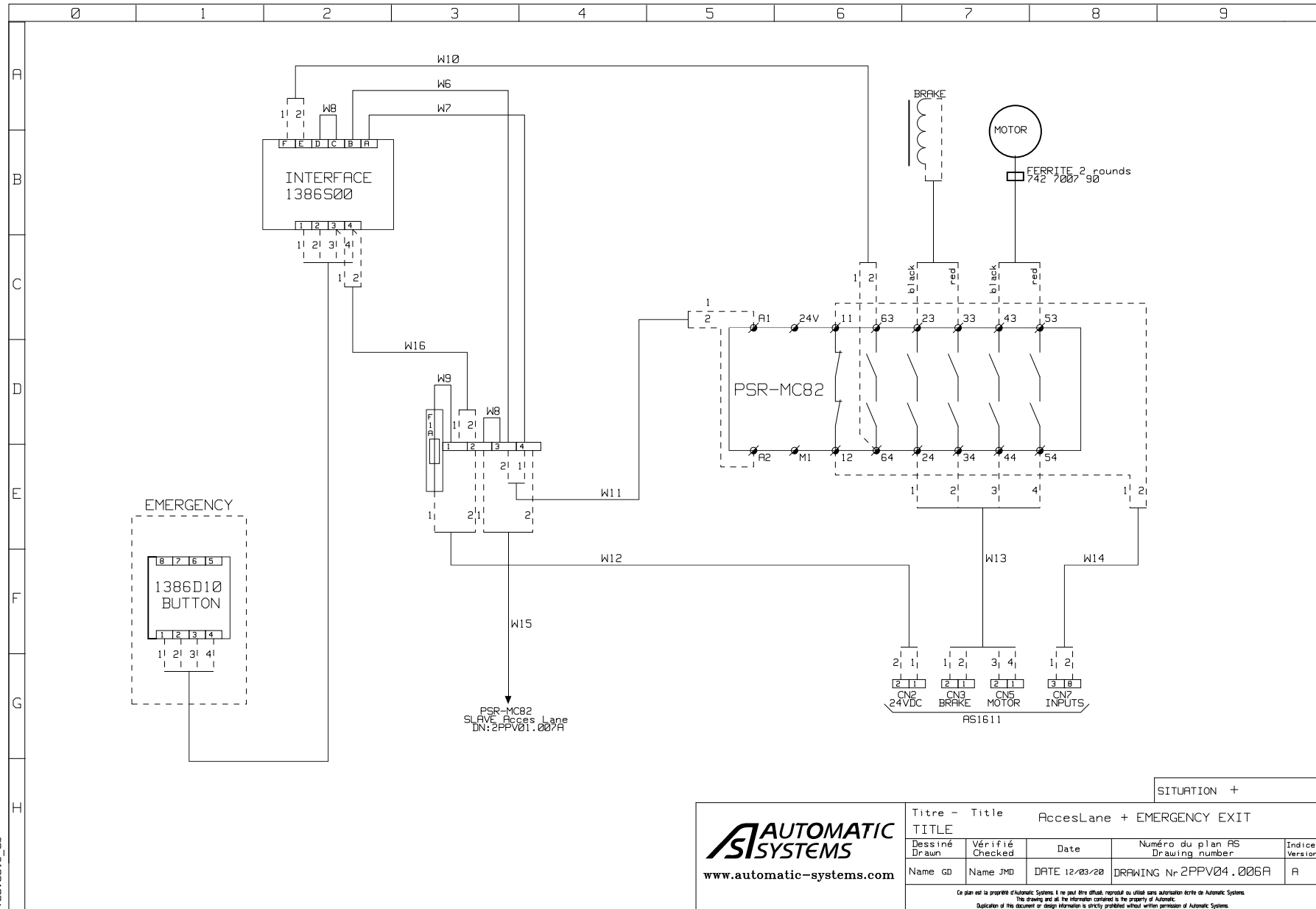
CONTRACT:

LOCATION: +1

ACCESLANE SLAVE

REV.	DATE	NAME	CHANGES	REVISION
0	17-03-22	vroze		0
User data 1			User data 2	SCHEME
				01

ACCESSLANE - GLASS SWING GATES



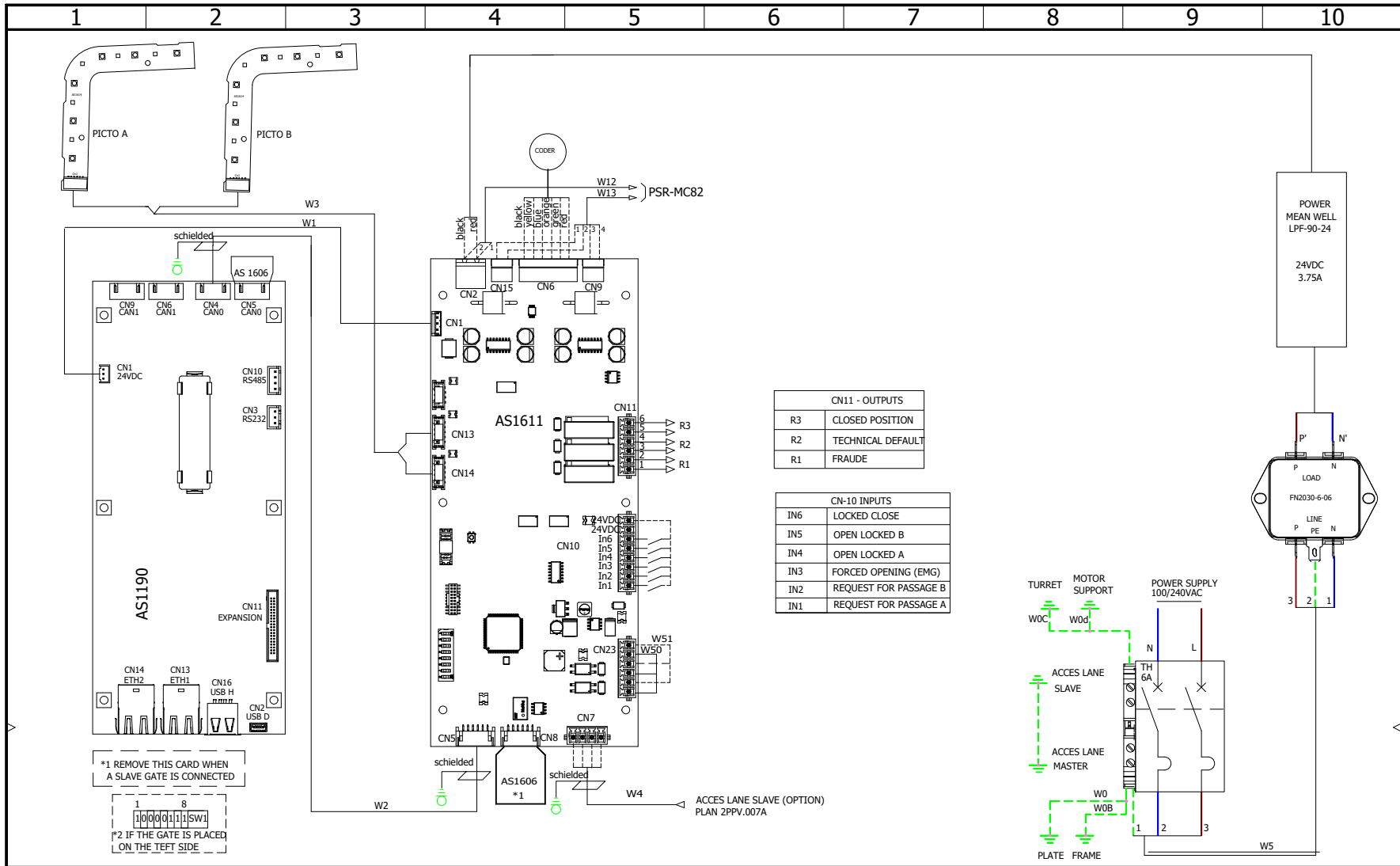
SITUATION +

AUTOMATIC SYSTEMS
www.automatic-systems.com

Titre - Title		AccesLane + EMERGENCY EXIT		
TITLE				
Dessiné Drawn	Vérifié Checked	Date	Numéro du plan AS Drawing number	Indice Version
Name GD	Name JMD	DATE 12/03/20	DRAWING Nr 2PPV04.006A	A
<small>Ce plan est la propriété d'Automatic Systems. Il ne peut être diffusé, reproduit ou utilisé sans autorisation écrite de Automatic Systems. This drawing and all the information contained is the property of Automatic. Duplication of this document or design information is strictly prohibited without written permission of Automatic Systems.</small>				

v00.001.c 06

ACCESSLANE - GLASS SWING GATES



CN11 - OUTPUTS	
R3	CLOSED POSITION
R2	TECHNICAL DEFAULT
R1	FRAUDE

CN10 - INPUTS	
IN6	LOCKED CLOSE
IN5	OPEN LOCKED B
IN4	OPEN LOCKED A
IN3	FORCED OPENING (EMG)
IN2	REQUEST FOR PASSAGE B
IN1	REQUEST FOR PASSAGE A

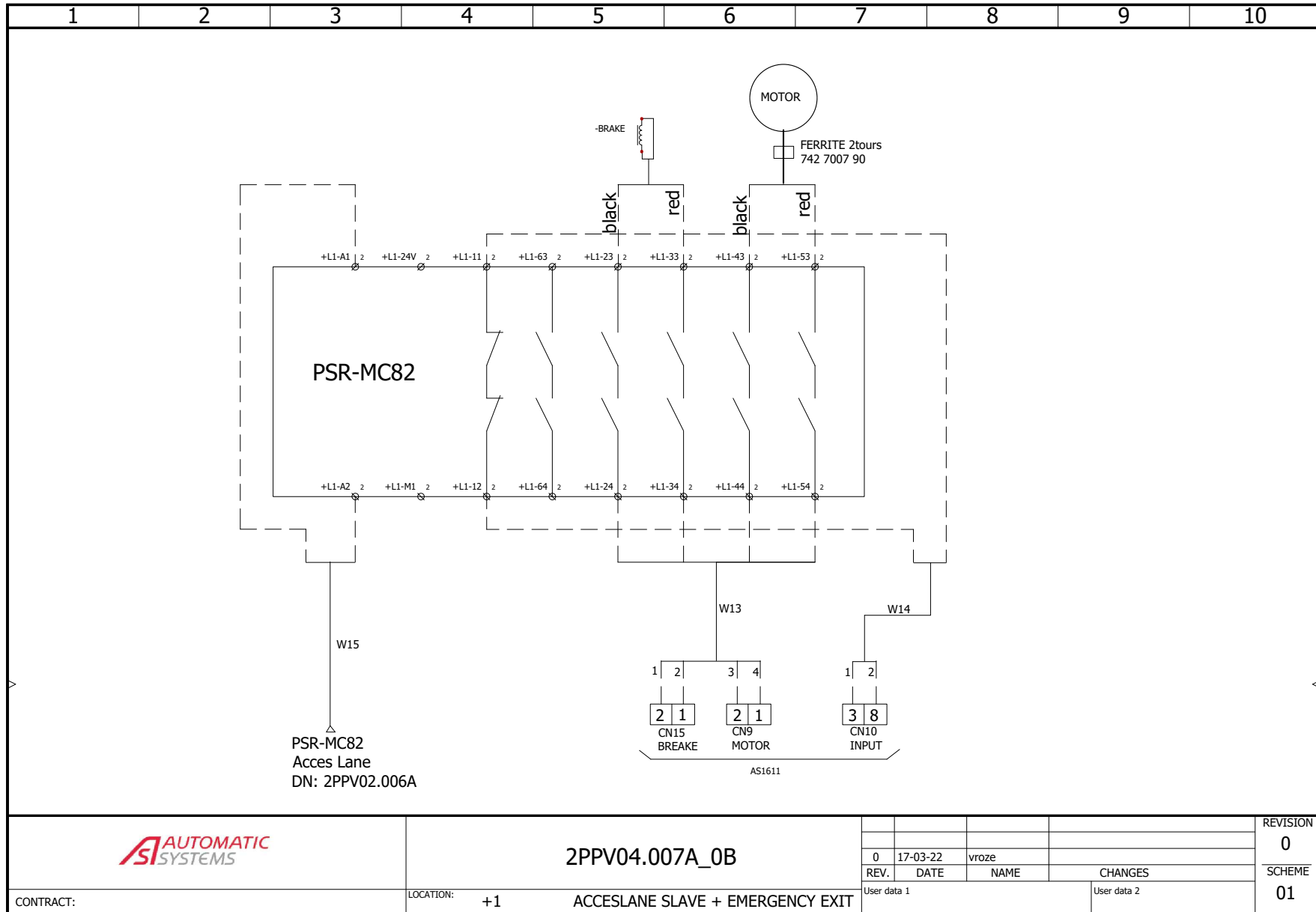
*1 REMOVE THIS CARD WHEN A SLAVE GATE IS CONNECTED

*2 IF THE GATE IS PLACED ON THE LEFT SIDE

SOLIDWORKS Electrical

	2PPV01.006B_0B			REVISION
				0
CONTRACT:	LOCATION: +1	ACCESLANE + EMERGENCY EXIT	REV. 0	SCHEME
			DATE 17-03-22	01
			NAME vroze	
			CHANGES	
			User data 1	
			User data 2	

ACCESSLANE - GLASS SWING GATES

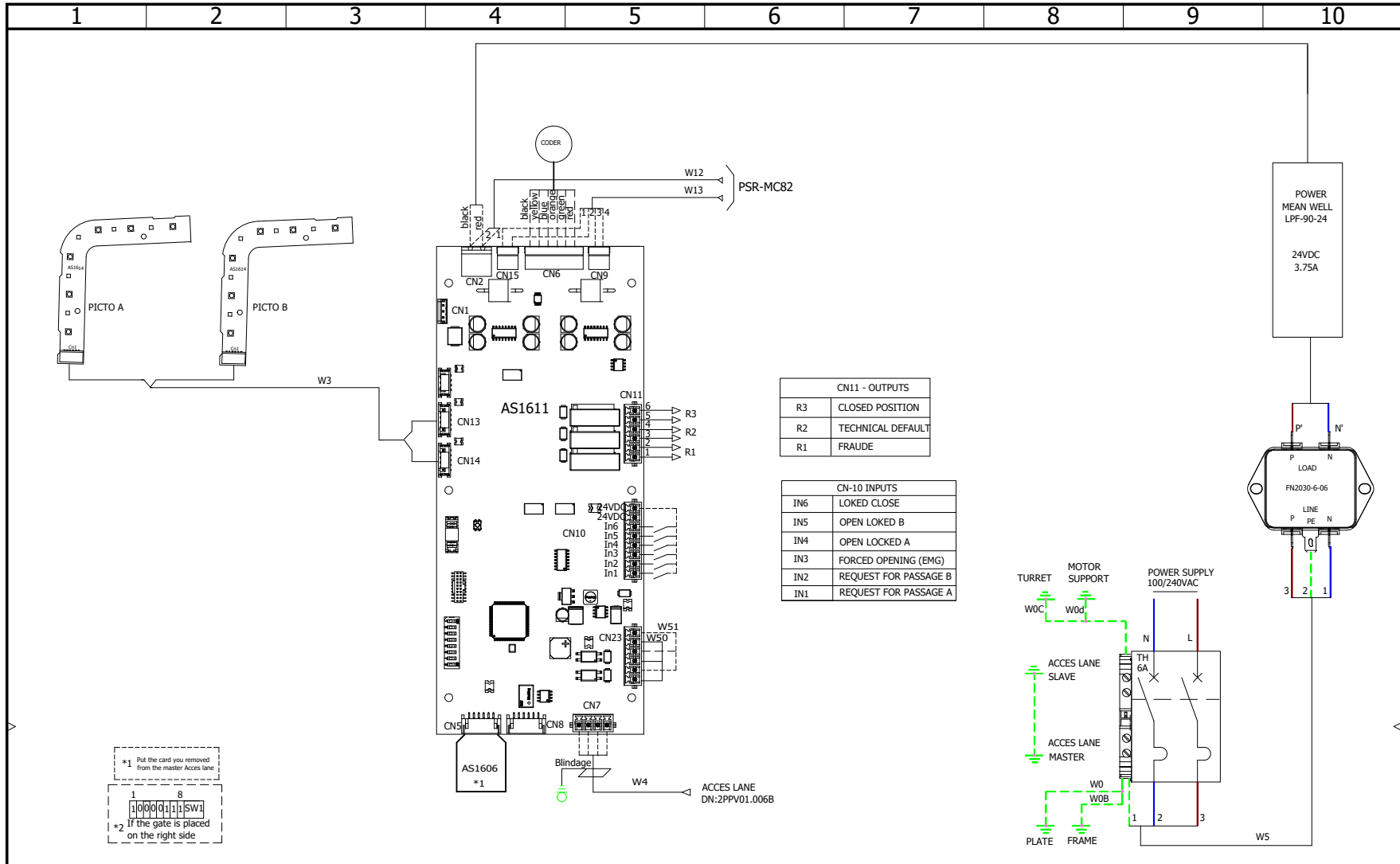


SOLIDWORKS Electrical



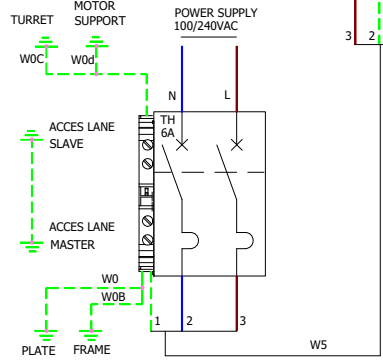
Document realized with version : 2021.0.3.5

ACCESSLANE - GLASS SWING GATES



CN11 - OUTPUTS	
R3	CLOSED POSITION
R2	TECHNICAL DEFAULT
R1	FRAUDE

CN-10 INPUTS	
IN6	LOKED CLOSE
IN5	OPEN LOKED B
IN4	OPEN LOKED A
IN3	FORCED OPENING (EMG)
IN2	REQUEST FOR PASSAGE B
IN1	REQUEST FOR PASSAGE A



+1 Put the card you removed from the master Access lane

+2 If the gate is placed on the right side

SOLIDWORKS Electrical

	2PPV01.007B_0B			REVISION
	CONTRACT:	LOCATION: +1	ACCESLANE SLAVE + EMERGENCY EXIT	0
	REV.	DATE	NAME	SCHEME
	0	17-03-22	vroze	01
	CHANGES			
	User data 1			User data 2